

▼ ESP1500/2500 Servo Intelligent Pressure Pumps



Maximum output pressure: 150/250MPa

Motor power: 1.5KW

Low pressure flow: 2.5L/Min

High pressure flow: 0.2/0.3L/Min

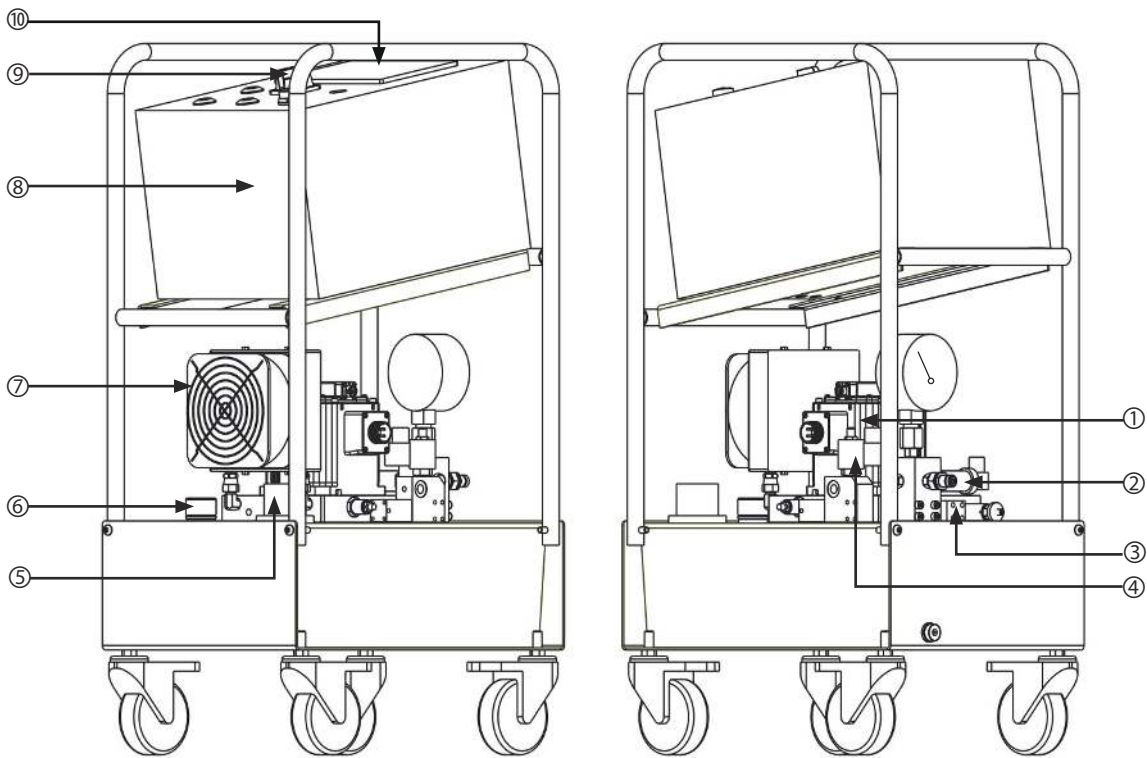
Available oil capacity: 20L

- PLC touch screen, built-in automatic pressure control program
- Set the target pressure after a key start, automatic pressure maintenance
- Direct drive pressure pump structure, no supercharger, high life, good pressure stability
- Manual emergency pressure relief knob, can still be emergency pressure relief in the case of power failure
- Air-cooled radiator, continuous work of low hydraulic oil temperature rise
- pressure holding accuracy can be set, 0.5MPa Control accuracy
- Real-time recording of pressure-time curve
- External adjustable pressure limiting valve
- With boost pressure timeout alarm and sensor signal alarm function
- Display unit MPa/BAR/PSI/KN can be switched
- Equipped with liquid level sensor, with oil temperature level alarm function

▼ ESP Series Type Specification Sheet:

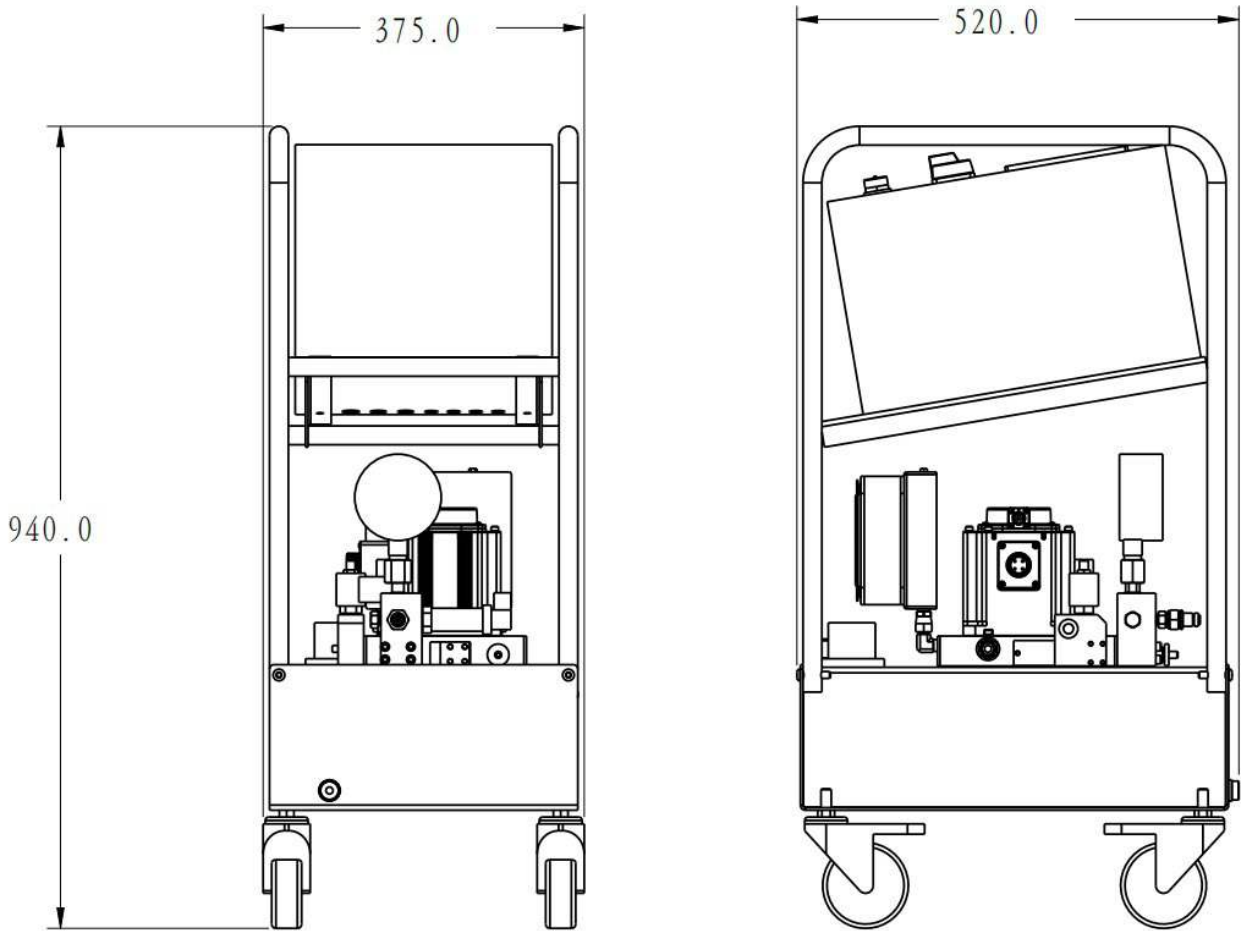
Model Number	Maximum output pressure	Voltage	Motor Power	Low Pressure Flow	High Pressure Flow	Available oil capacity	Touch screen size	Weight without oil
ESP1500	150MPa	230VAC	1.5KW	2.5L/Min	0.3L/Min	20L	7 inches	55KG
ESP2500	250MPa	230VAC	1.5KW	2.5L/Min	0.2L/Min	20L	7 inches	55KG

▼ ESP Series Product Illustration:

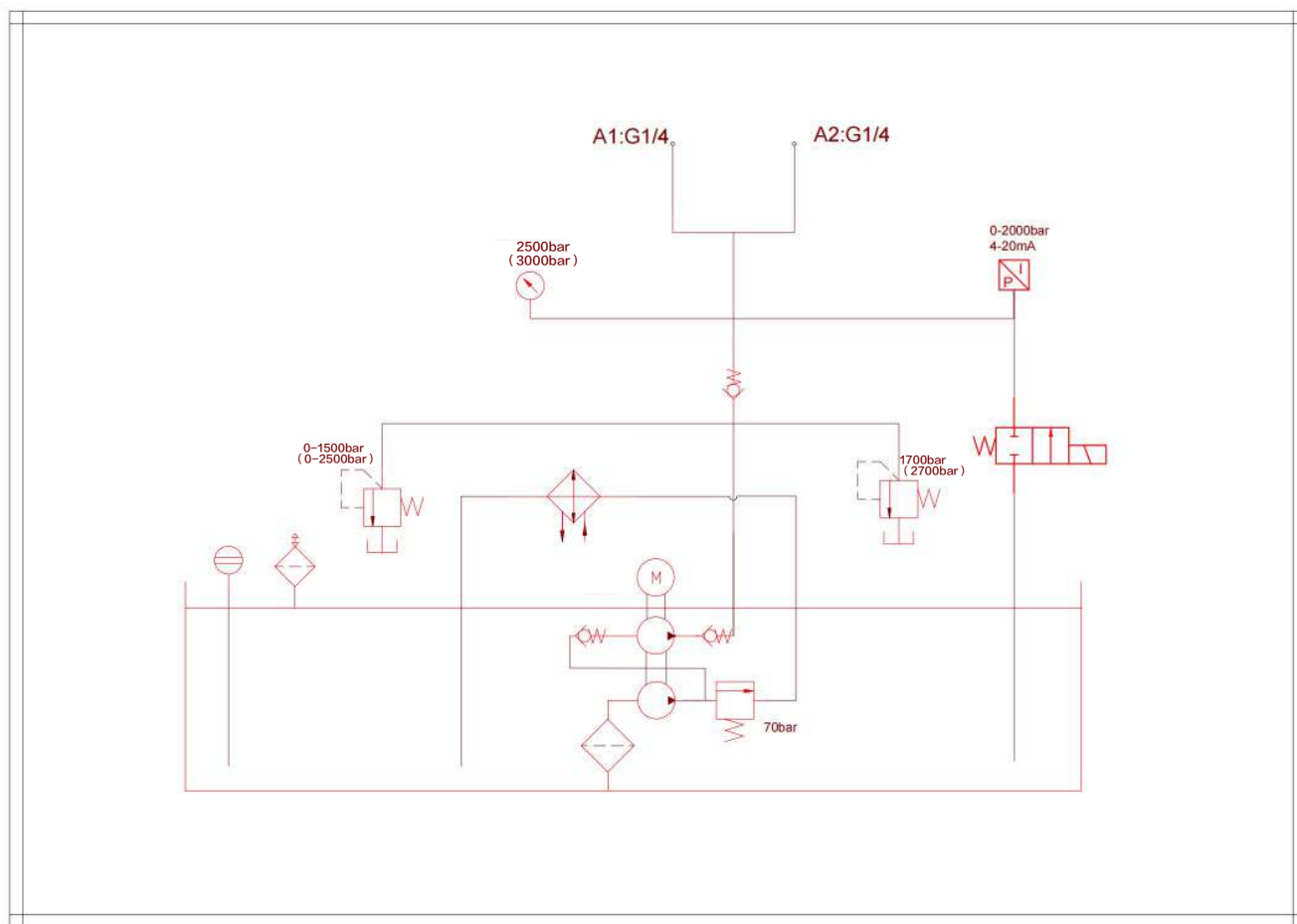


NO	Name
1	Servo motor
2	Pressure sensor
3	Pressure retaining valve block
4	Electromagnetic unloading valve
5	Liquid level temperature sensor
6	Refueling And Exhaust Outlet
7	Air Cooling Radiator
8	Electric Cabinet
9	Mains switch
10	PLC touch screen

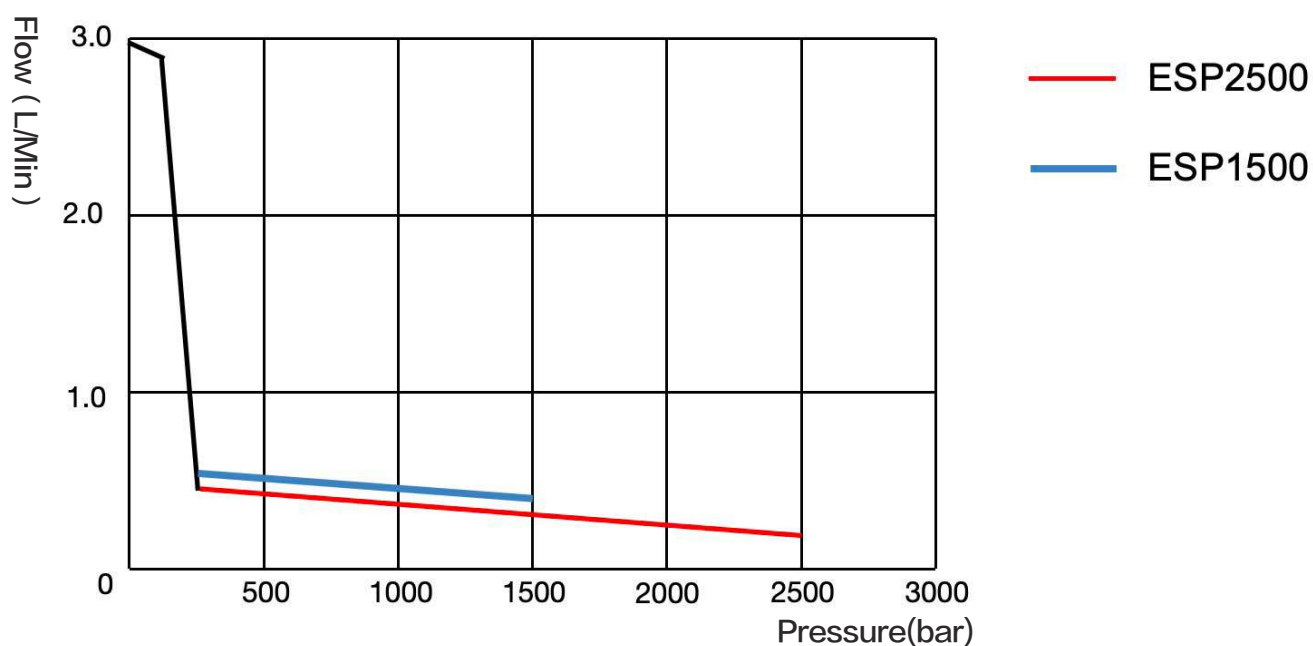
▼ ESP Series Outline Dimensional Drawing:



▼ ESP Series Hydraulic Schematic Diagram:



▼ ESP Series Flow-Pressure Curve:



▼ Operation main interface diagram:



Procedure of use:

- 1.Set the target pressure on the screen.
- 2.Click the start button.
- 3.The hydraulic pump automatically increases the pressure and reaches the target pressure, giving a status indication.
- 4.Perform pre-tightening, disassembly and installation, etc.
- 5.When the pressure drops to the set precision value, the servo starts the pressure compensation operation, and the pressure rises again to the target value.
- 6.Work completed, click the pressure relief button, the pressure is automatically unloaded.

▼ Historical curve query:

