

▼ BPD700 lithium battery hydraulic pumps



BPD lithium battery hydraulic pumps

Maximum output pressure : 70MPa

Power size : 750W

Low pressure flow : 4.8L/Min

High pressure flow : 0.45L/Min

- All-encompassing integrated frame design with built-in cable winder for easy cable management and enhanced protection.
- 6m wired control handle for easier operation.
- Equipped with a precision pressure regulating valve that can lock at the target pressure.
- Fitted with a servo motor, operating noise is below 75dB.
- Standard configuration includes one 26AH large-capacity lithium battery for long-lasting performance.
- Lithium batteries can be purchased separately, and a charger is included with the battery.
- Comes with a pressure gauge and quick connectors. The pressure gauge can be quickly installed and removed without rotation.
- Equipped with an electromagnetic automatic exhaust valve that automatically opens for intake and exhaust when powered on.
- Three-speed settings (high, medium, low) to meet a wider range of application scenarios.

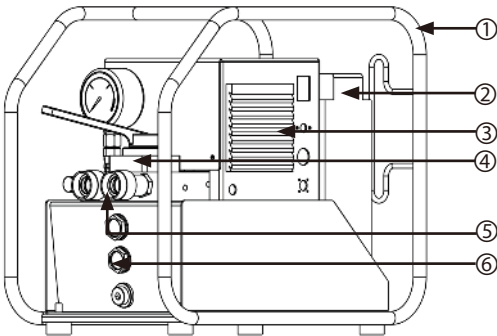
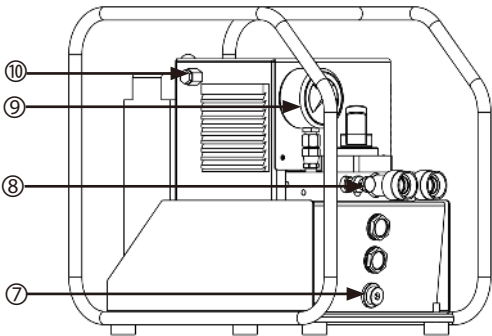
▼ BPD700 Type Specification Sheet

Model	Voltage	Power Size	Low-pressure Flow	High-pressure Flow	Tank Capacity	Weight without Oil	Number of Oil Outlets
BPD700	48VDC	750W	4.8L/Min	0.45L/Min	5L	26KG	2

▼ BPD700 Packaging list

Model	Specification	Quantity
BPD700	Lithium battery wrench pump	1
BP-48V-26AH	Lithium battery, 48V 26AH	1
Quick charger	6V $\approx$ 2A	1

▼ BPD700 Product Illustration



NO	Name
1	Protected Framework
2	Lithium battery
3	Heat dissipation outlet
4	Manual Directional Valve
5	Couplers
6	Sight Glass
7	Oil Drain
8	Relief Valve
9	Gauge
10	Exhaust port

## ▼Introduction to the BP - 48V - 26AH lithium battery



◆BP-48V-26AH lithium battery can be purchased separately.

## ▼BP-48V-26AH Packaging list

Model	Specification	Quantity
BP-48V-26AH	Lithium battery, 48V 26AH	1
Quick charger	6V $\equiv$ 2A	1
Carton	Carton packaging	1

### Technical Features :

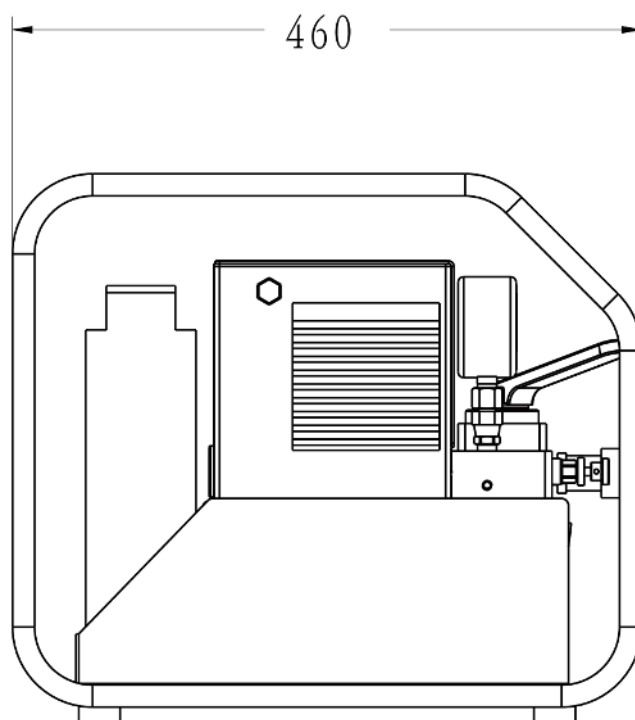
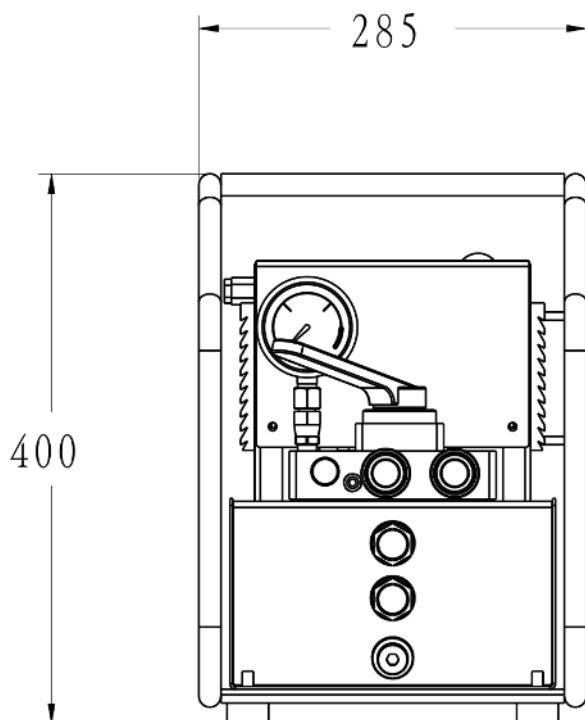
#### Safety Protection :

- Built-in High-quality BMS Battery Management System:** This system can accurately monitor and manage the charging and discharging processes of the battery, ensuring the safe and stable operation of the battery. It effectively prevents issues such as overcharging, over-discharging, and overheating, extends the battery's service life, and improves the battery's utilization efficiency.
- Overcharge Protection:** Effectively prevents the battery from overcharging, avoiding battery damage or safety hazards caused by overcharging.
- Over-discharge Protection:** Prevents the battery from over-discharging, extending the battery's service life and ensuring safe use.
- Over-temperature Protection:** Automatically protects the battery when it is in an over-temperature state, preventing various risks caused by high temperatures.
- Short-circuit Protection:** The fuse automatically protects the battery in case of a short circuit, avoiding equipment damage caused by short circuits.
- PTC Protection:** It can balance temperature and current, providing comprehensive safety protection.

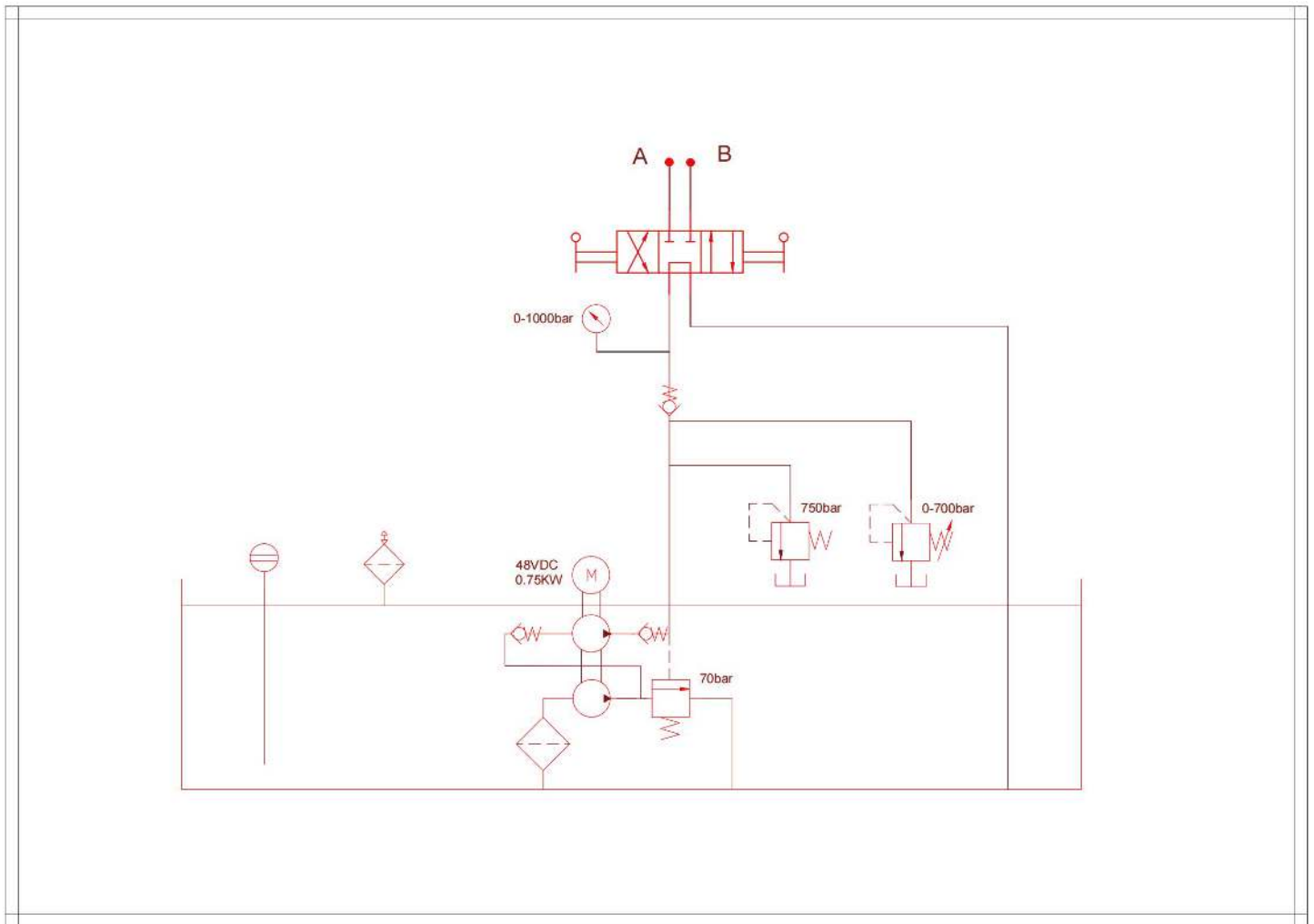
#### Performance :

- Powerful Performance:** Equipped with an intelligent chip, the product performs excellently in operation and processing.
- Large Capacity:** It has a large capacity, meeting more usage requirements.
- Portable Design:** The product is designed for easy carrying, facilitating users in various scenarios.
- Shock and Impact Resistance:** It has the ability to resist shock and impact, effectively protecting internal components when subjected to external forces and improving the product's durability.

## ▼BPD700 Outline Dimensional Drawing :



## ▼ BPD700 Hydraulic Schematic Diagram:



## ▼ BPD Pressure Flow Diagram:

