

## ▼ BEP Lithium Battery Ultra-High Pressure Pumps



Maximum Pressure: 150/250MPa

Motor size: 750W

Low pressure flow: 1.5L/Min

Reservoirs capacity: 5L

- One-piece frame with integrated wire winder design, facilitating control wire storage
- Equipped with a precision pressure regulating valve, which can be locked when the target pressure is reached
- Equipped with a servo motor, with operating noise below 75dB
- Comes standard with one 26AH high-capacity lithium battery for long endurance
- Lithium batteries can be purchased separately; a charger is included as standard with the battery
- Equipped with a pressure gauge and quick connector; the pressure gauge supports rotary-free quick assembly and disassembly
- Equipped with an electromagnetic automatic exhaust valve, which automatically activates air intake and exhaust functions when powered on
- Equipped with a motor speed adjustment button, supporting 3-speed regulation
- Aluminum oil tank, featuring light weight and excellent heat dissipation performance

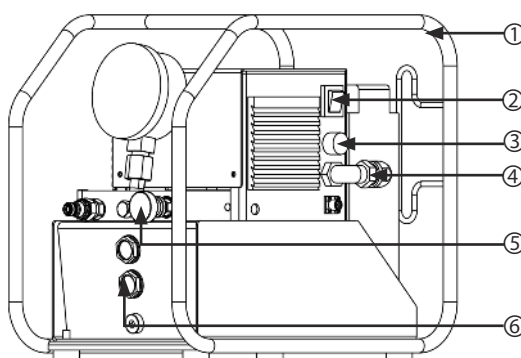
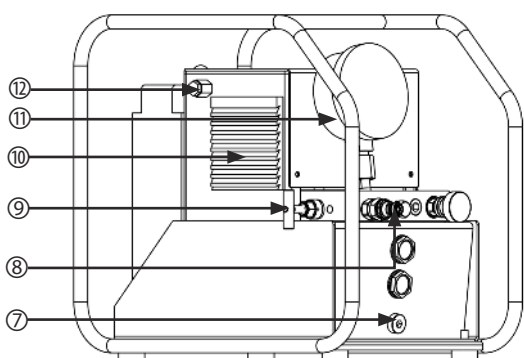
### ▼ BEP Product Specification Sheet:

Model	Maximum Pressure	Voltage	Power	Low Pressure Flow	High Pressure Flow	Tank Capacity	Weight (Without Oil)	Number of Oil Outlet Ports
BEP1500	150MPa	48VDC	750W	1.5L/Min	0.25L/Min	5L	22KG	2
BEP2500	250MPa	48VDC	750W	1.5L/Min	0.15L/Min	5L	22KG	2

### ▼ BEP Packing List:

Model	Specification	Quantity
BPD700	Lithium battery ultra-high pump	1
BP-48V-26AH	Lithium battery, 48V 26AH	1
Quick charger	48V 5A	1

### ▼ BEP Product Schematic Diagram:



NO	Name
1	Protective Frame
2	Main Switch
3	Motor Speed Knob
4	Battery Connection Cable
5	Relief Valve
6	Oil Level Gauge
7	Oil Drain Port
8	Male Connector
9	Quick Connector
10	Heat Dissipation Port
11	Pressure Gauge
12	Air Exhaust Port

# Ultra-high Pressure Pumps (150-350MPa)

## ▼ Introduction to the BP - 48V - 26AH lithium battery



◆BP-48V-26AH lithium battery can be purchased separately.

## ▼BP-48V-26AH Packaging list

Model	Specification	Quantity
BP-48V-26AH	Lithium battery, 48V 26AH	1
Quick charger	48V $\overline{\text{---}}$ 5A	1
Carton	Carton packaging	1

## Technical Features:

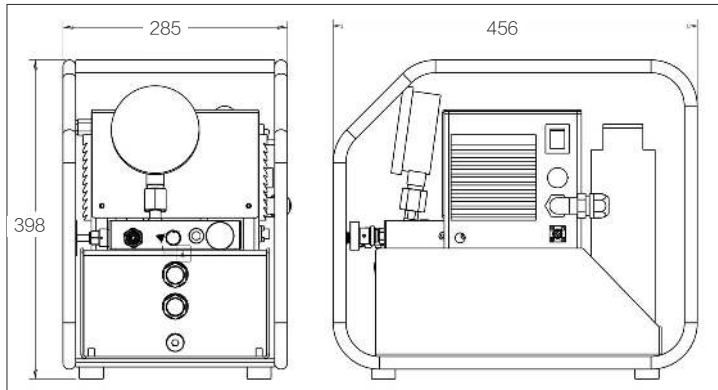
### Safety Protection:

- Built-in High-quality BMS Battery Management System:** This system can accurately monitor and manage the charging and discharging processes of the battery, ensuring the safe and stable operation of the battery. It effectively prevents issues such as overcharging, over-discharging, and overheating, extends the battery's service life, and improves the battery's utilization efficiency.
- Overcharge Protection:** Effectively prevents the battery from overcharging, avoiding battery damage or safety hazards caused by overcharging.
- Over-discharge Protection:** Prevents the battery from over-discharging, extending the battery's service life and ensuring safe use.
- Over-temperature Protection:** Automatically protects the battery when it is in an over-temperature state, preventing various risks caused by high temperatures.
- Short-circuit Protection:** The fuse automatically protects the battery in case of a short circuit, avoiding equipment damage caused by short circuits.
- PTC Protection:** It can balance temperature and current, providing comprehensive safety protection.

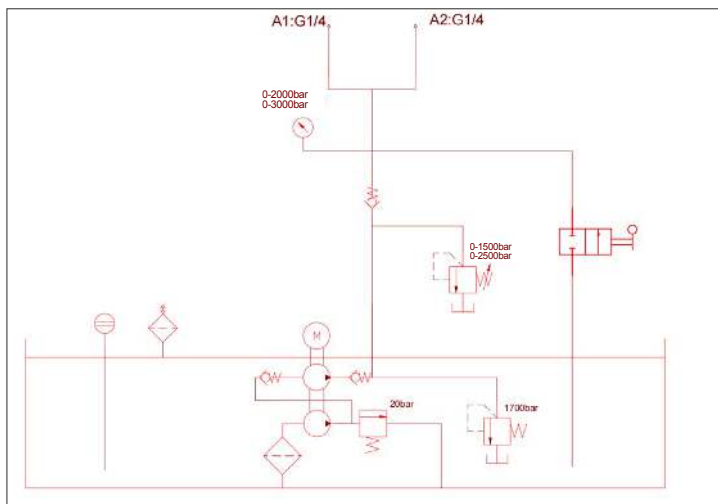
### Performance:

- Powerful Performance:** Equipped with an intelligent chip, the product performs excellently in operation and processing.
- Large Capacity:** It has a large capacity, meeting more usage requirements.
- Portable Design:** The product is designed for easy carrying, facilitating users in various scenarios.
- Shock and Impact Resistance:** It has the ability to resist shock and impact, effectively protecting internal components when subjected to external forces and improving the product's durability.

## ▼ BEP Outline Dimension Drawing:



## ▼ BEP Hydraulic Schematic Diagram:



## ▼ BEP Pressure-Flow Diagram:

